



# EASY X-TRAC<sup>®</sup> SYSTEM

The **Easy X-TRAC<sup>®</sup> System** is used to perform a minimally invasive tooth extraction on single and double rooted teeth. The system allows for immediate implantation after extraction, and eliminates all rotary/pulling movements, post-traumatic swelling, and need for bone restoration.



Easy X-TRAC<sup>®</sup> System Complete Kit  
K8100 Kit Includes: XT100 Easy X-TRACTOR<sup>®</sup>, XT110 (set of 3 drills), XT120 X-TRAC<sup>®</sup> Ratchet, XT128 (set of 3 28mm screws), XT130 (set of 3 30mm screws), XT133 (set of 3 33mm screws), XT135 (set of 3 33mm screws, 2mm in diameter), XT140L (left side Protector Plate), XT140R (right side Protector Plate), and a Sterilization Cassette.



## FEATURES & BENEFITS

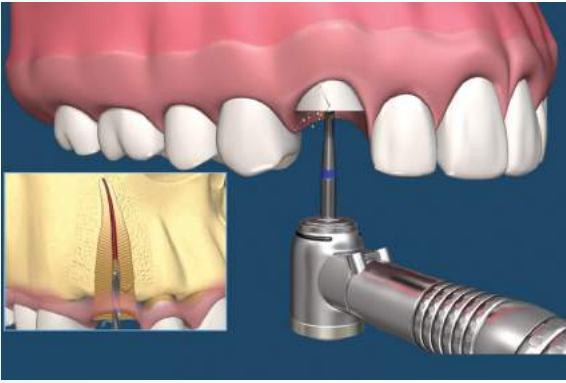
- Minimally Invasive Tooth Extraction
- Allows for Immediate Loading of Implants After Extraction
- No Pressure, Pulling or Rotary Movements Necessary for Extraction
- No Post-traumatic Swelling
- No Bone Restoration

*"It is virtually non-invasive. It is faster and less traumatic than Periotome extraction and is indispensable for immediate dental implant placement in extraction sites. Without it, I could not provide the quality of care I want for my patients."*

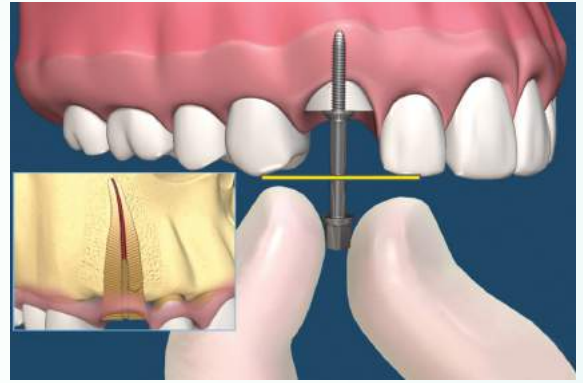
- Dennis A. Shanelec, DDS Santa Barbara, CA



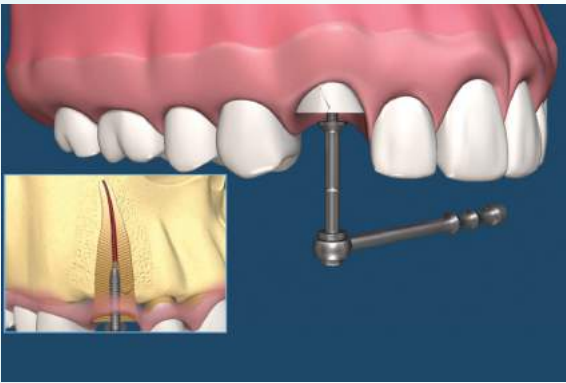
# The Procedure



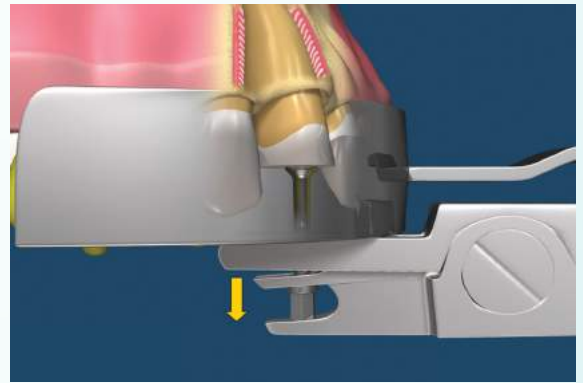
Preparation of the root canal with the Easy X-TRAC® root-drill.



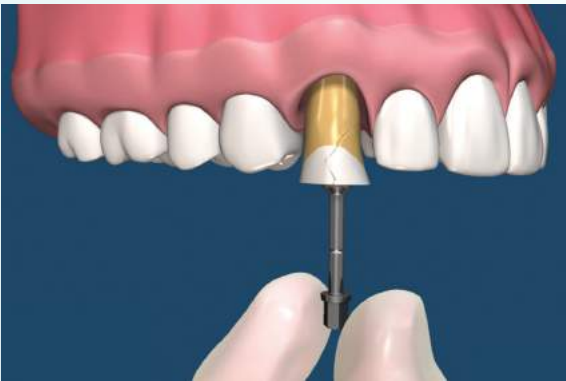
Placement of self-cutting Easy X-TRAC® Screw in the root canal.



With the use of the X-TRAC® Ratchet, screw the self-cutting Easy X-TRAC® Screw into the root canal.



Position the Protector Plate on the tooth row. Turning the handle screw on the Easy X-Tractor® allows the jaws to open up and pulls the tooth using vertical force only.



After removal of both Protector Plate and Easy X-Tractor® the tooth can be easily removed.



The Result: No trauma to either the soft or the hard tissue, therefore no post-traumatic swelling and no damage to the buccal plate. Ready for an implant?

